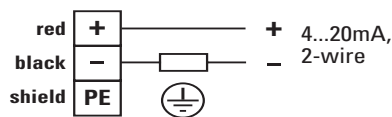


Level probe, capacitive measuring cell. Slim, precise, drinking water certificate.

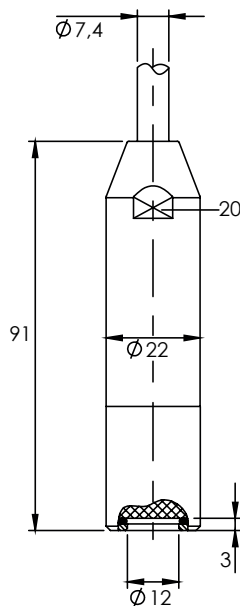


- Slim submersible probe Type TDS-71xxx
- High accuracy, deviation < 0.3%
- Wide range of applications, temperature compensated.

Electrical connection:



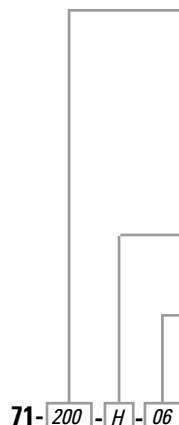
U = 12...30 V DC



Technical specifications:

Meas. ranges:	Smallest measuring range 0 - 50 mbar Largest measuring range 0 - 10 bar Standard: 0 - 200 mbar, 6 m cable
Output:	4 ... 20 mA, 2-wire principle, standard.
Supply voltage:	10 ... 30 V DC
Measuring cell:	Ceramic Al ₂ O ₃ , capacitive ! Actively temperature compensated.
Response time:	Response time < 200 ms Power-up time < 500 ms
Error:	< 0,3 % FSO
Thermal drift:	< 0.03 % / K in offset < 0.03 % / K in gain
Ambient Temp.:	-25 ... +80 °C (in some cases higher)
Housing:	Stainless steel 1.4404 (316 L, V4A) Open measuring cell with large access hole.
Probe head:	Diameter 22 mm Weight approx. 0.2 kg, without cable
Cable:	6 m cable as standard. With capillary for atmospheric pressure compensation. For oil with PUR submersible cable For drinking water with PE submersible cable
Application areas:	Heating oil, diesel, biodiesel, HV100, oils, AdBlue, drinking water, industrial water, liquid fertilizer, others upon request. Not for gasoline, kerosene, petroleum, EX zones.

Article code:



Meas. ranges. from 0...50 mbar or higher:
50 mbar, with standard 6m cable (H/P 06)
100 mbar, with standard 6m cable (H/P 06)
200 mbar, with standard 6m cable (H/P 06)
250 mbar, with standard 6m cable (H/P 06)
400 mbar, with standard 10m cable (H/P 10)
etc. Other cable lengths upon request

H = PE cable blue, drinking water certified
P = PUR cable black

Cable length in m:
06 = 6 m (no extra charge)
10
15, 20, 25, etc.

