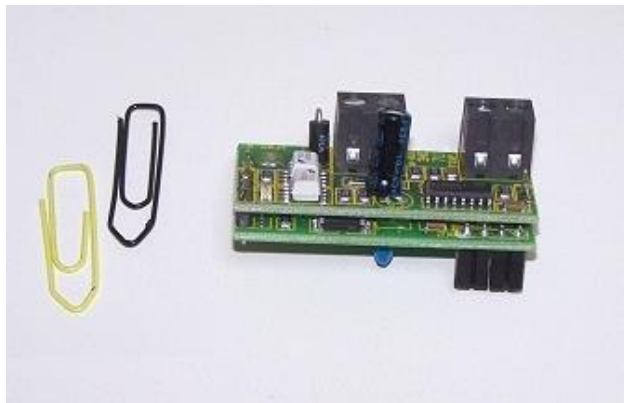


**Adaptor plug with M-BUS output**

for the TECSON device series **LX-2**, **e-litro** and **Smartbox**.

**Plug location:**

The adaptor has to be plugged to the designated spot of the displaying device. The M-Bus needs to be attached to the two-wired output clamp on the right hand side.



M-Bus adaptor plug connection

**Device addressing:**

±SLAVE±component and primary addressing.

The device addressing is configurable via M-Bus (2400Baud).

In delivery condition the adaptor has the address 99. Via M-Bus command a new address can be assigned to the adaptor

**Temperature measurement input:**

The adaptor has a temperature measurement input that can be used optionally. If this function is not to be used the contact bridge stays inserted in the clamping block on the left hand side.

If the temperature measurement function is intended a PT-1000 sensor (or similar) can be attached to the clamping block on the left hand side. TECSON also provides level probes with an integrated temperature sensor for a parallel measuring of the filling level as well as the temperature.

As long as this input is utilized the respective temperature value will be displayed at the device and also supplied to the M-Bus protocol.

